



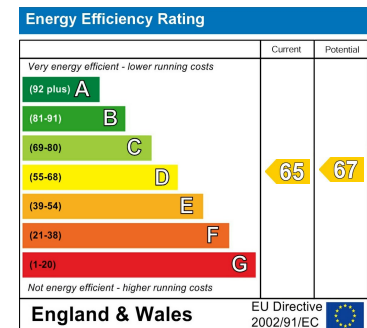
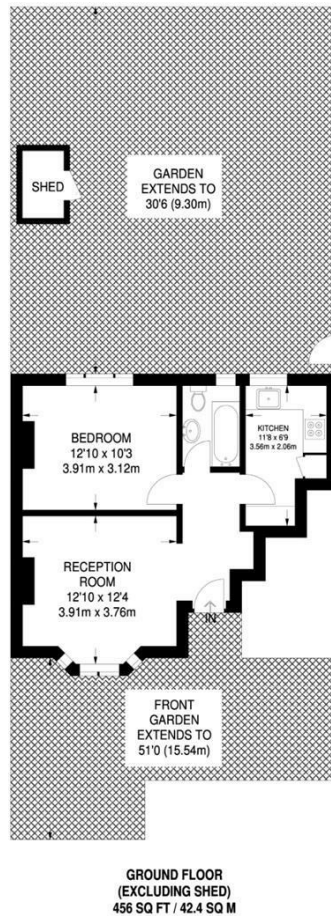
23 NEALE CLOSE

LONDON, N2 0LE

£1,875 PER MONTH

A BEAUTIFUL AND SPACIOUS ONE DOUBLE BEDROOM PURPOSE BUILT GROUND FLOOR MAISONETTE IN A HIGHLY SOUGHT AFTER QUIET AREA IN THE SUBURB WITH EASY OFF STREET PARKING (NOT ALLOCATED). BENEFITS INCLUDE FRONT AND REAR PRIVATE GARDEN, GAS C/H, FULLY FITTED KITCHEN, LARGE RECEPTION ROOM, SITUATED CLOSE TO SHOPS, TRANSPORT/EAST FINCHLEY UNDERGROUND AND AMENITIES. MUST BE SEEN.

david harris & co



Agents Note: Whilst every care has been taken to prepare these particulars, they are for guidance purposes only. All measurements are approximate and are for general guidance purposes only and whilst every care has been taken to ensure their accuracy, they should not be relied upon and potential buyers/tenants are advised to recheck the measurements

Finchley Lettings
358 Regents Park Road
Finchley
London
N3 2LJ

020 8346 9122
info@davidharris.co.uk
www.davidharris.co.uk

david harris & co